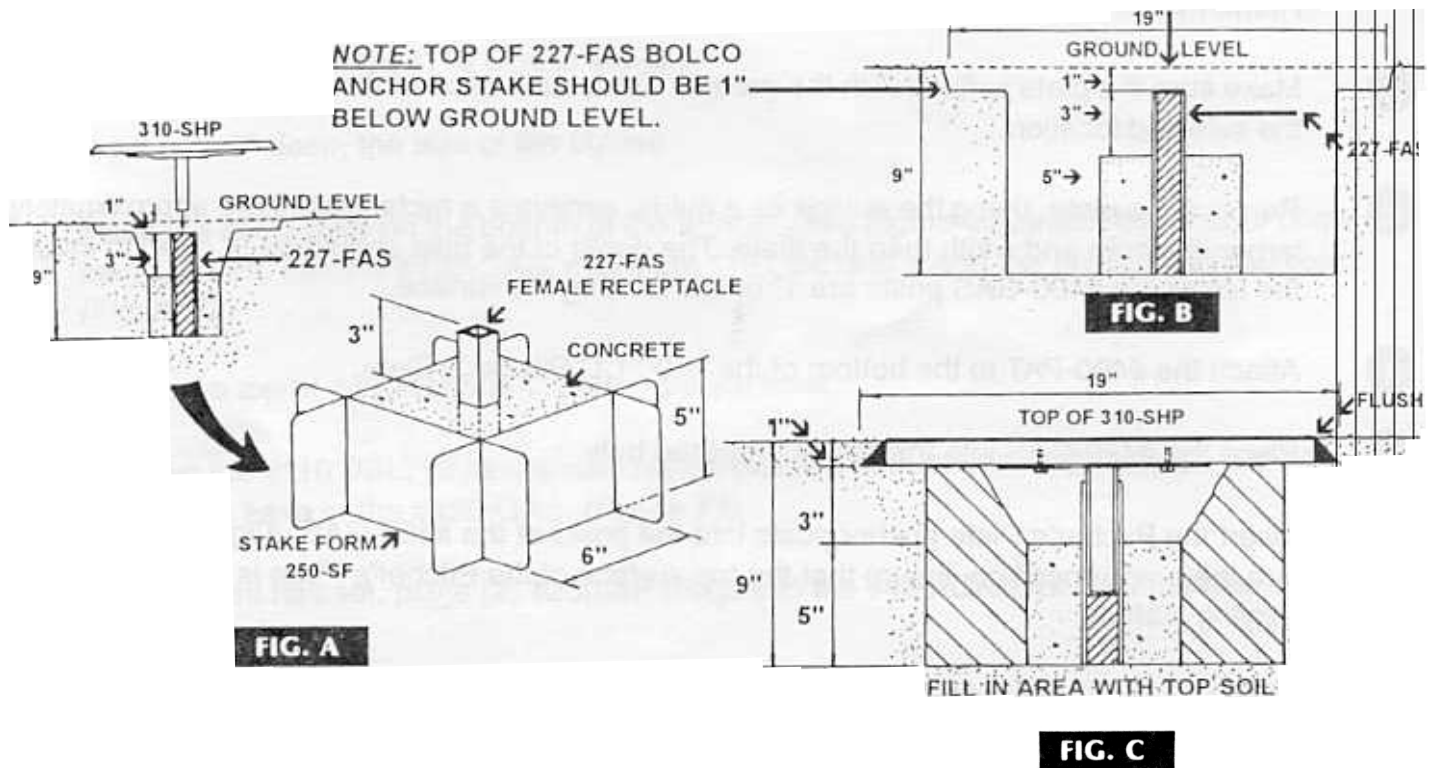


## BOLCO PRODUCTS INSTALLATION AND SAFETY INSTRUCTIONS FOR (310-SHP)

**WARNING:** BOLCO BASES, A DIVISION OF ADAMS USA, INC., ADVISES THAT BOLCO BASES, HOME PLATES AND PITCHERS' PLATES ARE DESIGNED TO BE A REFERENCE POINT ONLY ON A BASEBALL DIAMOND. THESE PRODUCTS ARE NOT DESIGNED TO BE USED IN WET, ICY, OR MUDDY CONDITIONS, AND SHOULD BE REPLACED WHEN TEXTURED SURFACE IS WORN. FURTHERMORE, SLIDING INTO A BASEBALL BASE OR HOME PLATE REPRESENTS A CLEAR AND PRESENT DANGER. INJURY MAY OCCUR.

**WARNING:** THE PURCHASER OF THESE PRODUCTS SHOULD TAKE WARNING THAT A DEVIATION FROM THE INSTALLATION INSTRUCTIONS COULD INCREASE THE RISK OF INJURY TO GAME PARTICIPANTS.



- Step #1.** Place 1 Bolco Stake Form Set (250-SF) on a level surface. Place 1 Bolco 227-FAS Anchor Stake, flanged end down, into the center of the form. Pour concrete into form until it is flush with the top of the form. The anchor stake should protrude approximately 3" above the top edge of the form (Fig. #A). Allow 3 days for the cement to cure and bond with the anchor stake before installing.
- Step #2.** Mark the location site for the home plate.
- Step #3.** Make sure the site is completely level.
- Step #4.** Excavate site to accommodate anchor stake block (Fig #B)
- Step #5.** Remove stake forms (250-SF) from concrete block. Place anchor stake block (from Step #1) into hole (Ref. Step #4). Place 310-SHP onto anchor assembly to check hole for proper depth (Fig. #C). TOP of 310-SHP should be flush with ground level.
- Step #6.** Remove the 310-SHP from anchor assembly. Fill in hole by tamping dirt solidly around anchor stake block. Allow an area the size of the 310-SHP to be 1" below the ground level. See Fig. C. Replace 310-SHP onto ground anchor post. The top of 310-SHP should not be higher or lower than ground level.

**WARNING:** BOLCO TOP ANCHOR MUST EXTEND A MINIMUM OF 3" INTO THE BOLCO 227-FAS ANCHOR STAKE.